

NSW Floodplain Harvesting

Are you measurement ready?

Novecom's SynaptiX Local Intelligence Device (LID) takes the pain out of reporting your use of floodplain water

Locally made for local conditions

Newcastle-based company Novecom, specialists in monitoring, sensors and the internet of things (IoT), has developed a LID to meet the legislative requirements of floodplain harvesting.

Supported by a local team of engineers and technicians who can assist you right through the process of installation and commissioning.

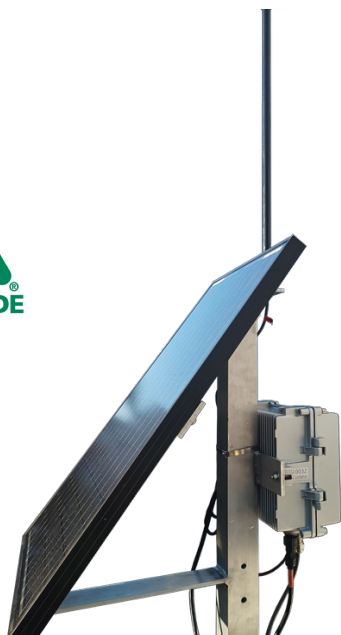
- Designed for the harsh Australian environment and built to last
- Buy quality and buy once

Primary and Secondary LIDs 2022-23 pricing

SynaptiX LID – Primary; \$2,500 (ex. GST)

SynpatiX LID – Secondary; \$2,300 (ex. GST)

Note: The SynaptiX LID (secondary) can be readily upgraded to a Primary approved LID. No need to buy another LID in the future.



Set and forget

The SynaptiX LID solution is a complete single unit, including a mounting frame and solar-battery power supply. The LID is supplied as a sealed, maintenance-free unit with pre-installed software to connect to either:

- The WaterNSW SIM for telemetry to the government's data acquisition portal (Primary LID), or
- The Novecom SynaptiX Asset Management System (SAMS) (Secondary LID).

Once the equipment is installed and connected to an approved storage meter, data will be transmitted automatically to the required data acquisition system.



novecom

t. +61 2 4924 5460 e. mail@novecom.com.au w. www.novecom.com.au